

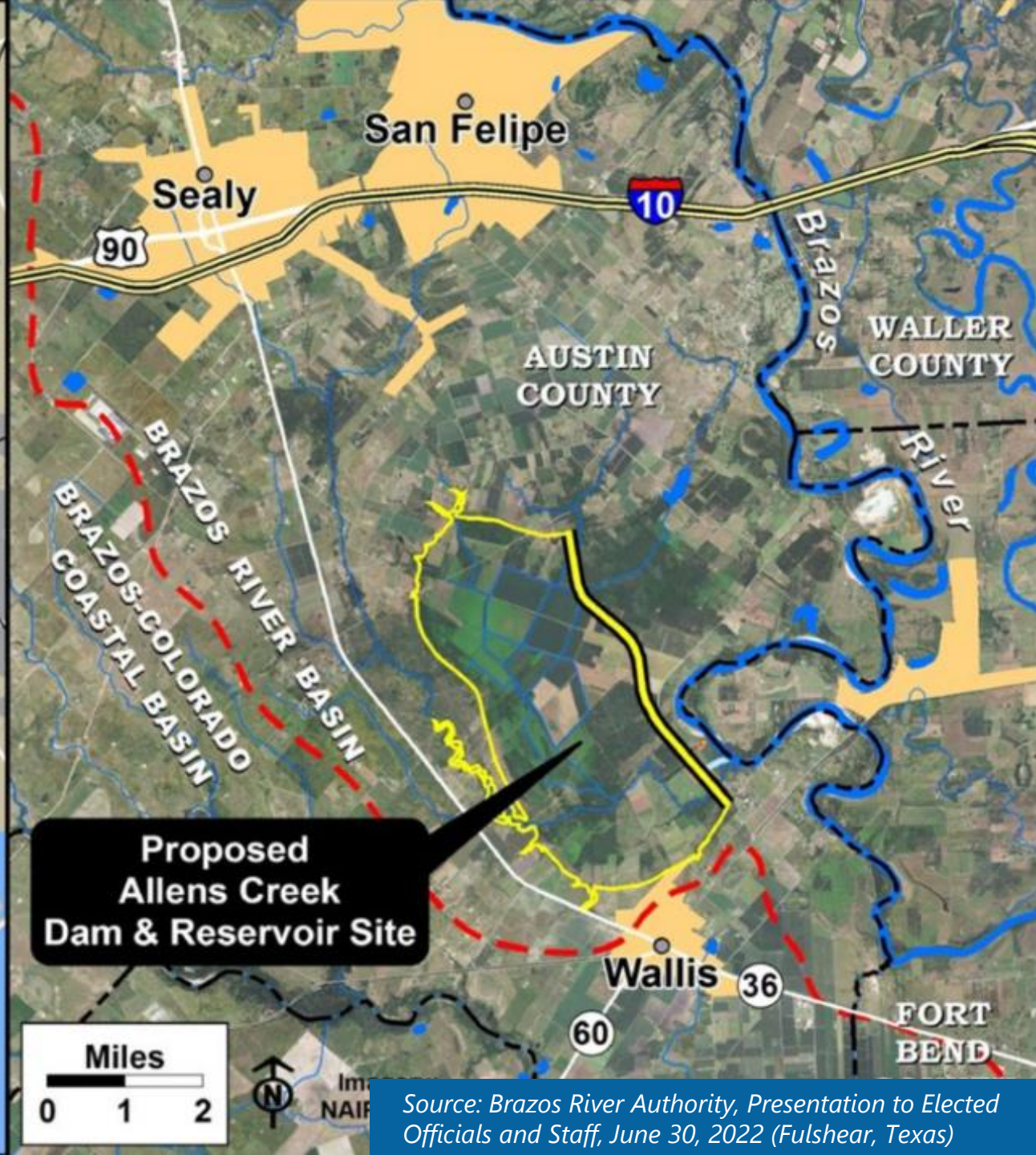
Allens Creek Reservoir Updates Council Presentation

July 19, 2022

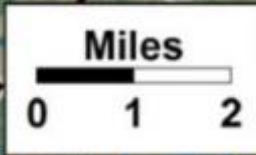




Allens Creek Reservoir Proposed Site

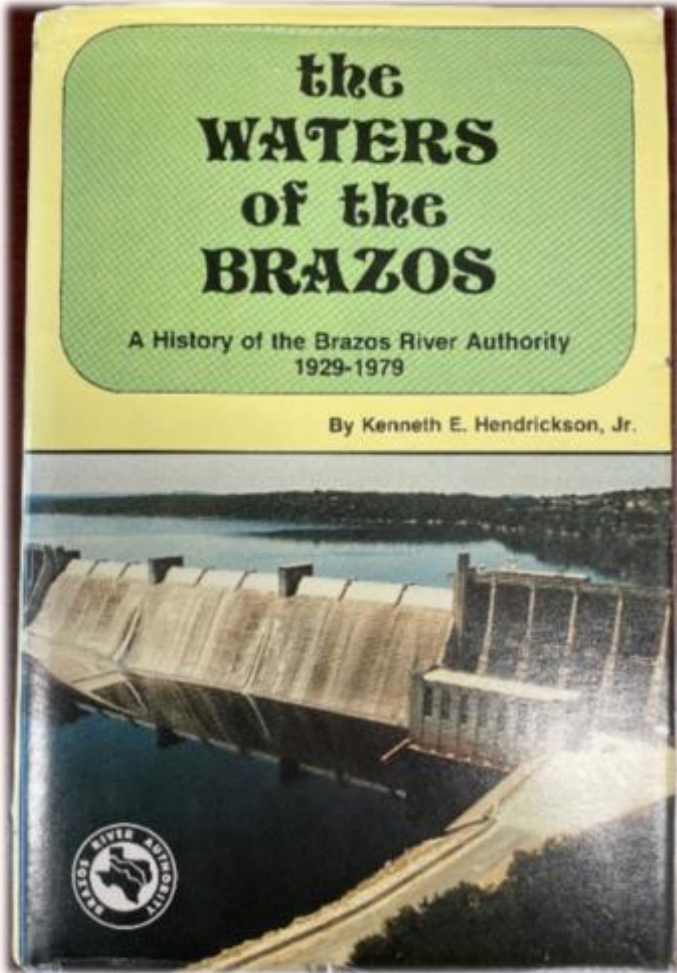


Proposed Allens Creek Dam & Reservoir Site





Background

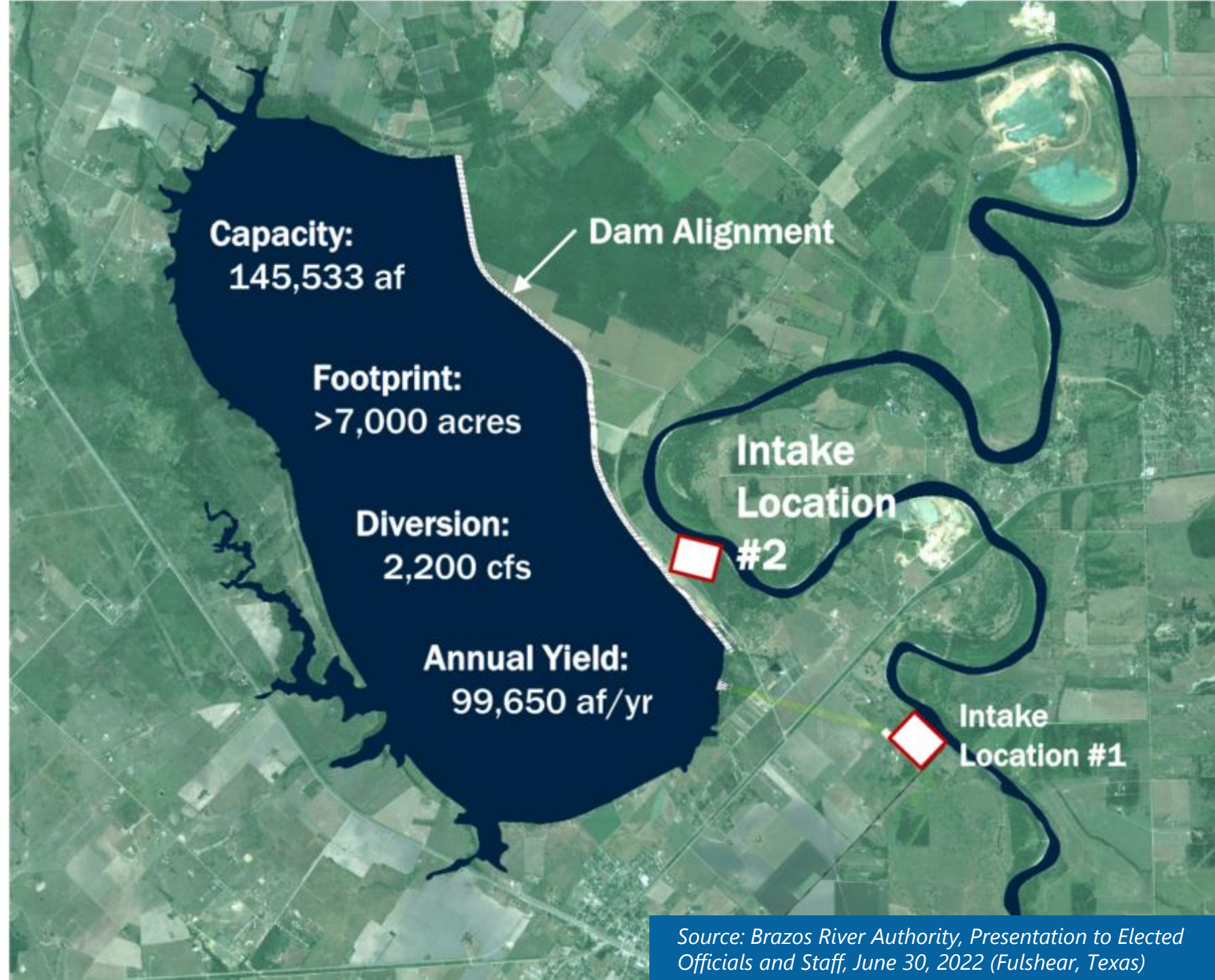


- Part of BRA 1950s “Six Dam Program”
- State Water Right Permit issued to HL&P in 1974
- HL&P purchased property but never pursued construction; Permit expired
- SB 1593 passed by Legislature in 1999 resulted in Permit being reissued to TWDB, BRA, and City of Houston; construction required by Sep 1, 2018
- BRA and Houston purchased Allens Creek property from HL&P in 2000 and obtained TWDB loan
- SB 1132 passed by Legislature in 2011 moved construction start date to no later than Sep 1, 2025
- HB 2846 passed by Legislature in 2019 required Houston to transfer its interest in the Project to BRA for \$23 million
- BRA and Houston reached a settlement in May 2022 for BRA to become the sole owner/developer of the project



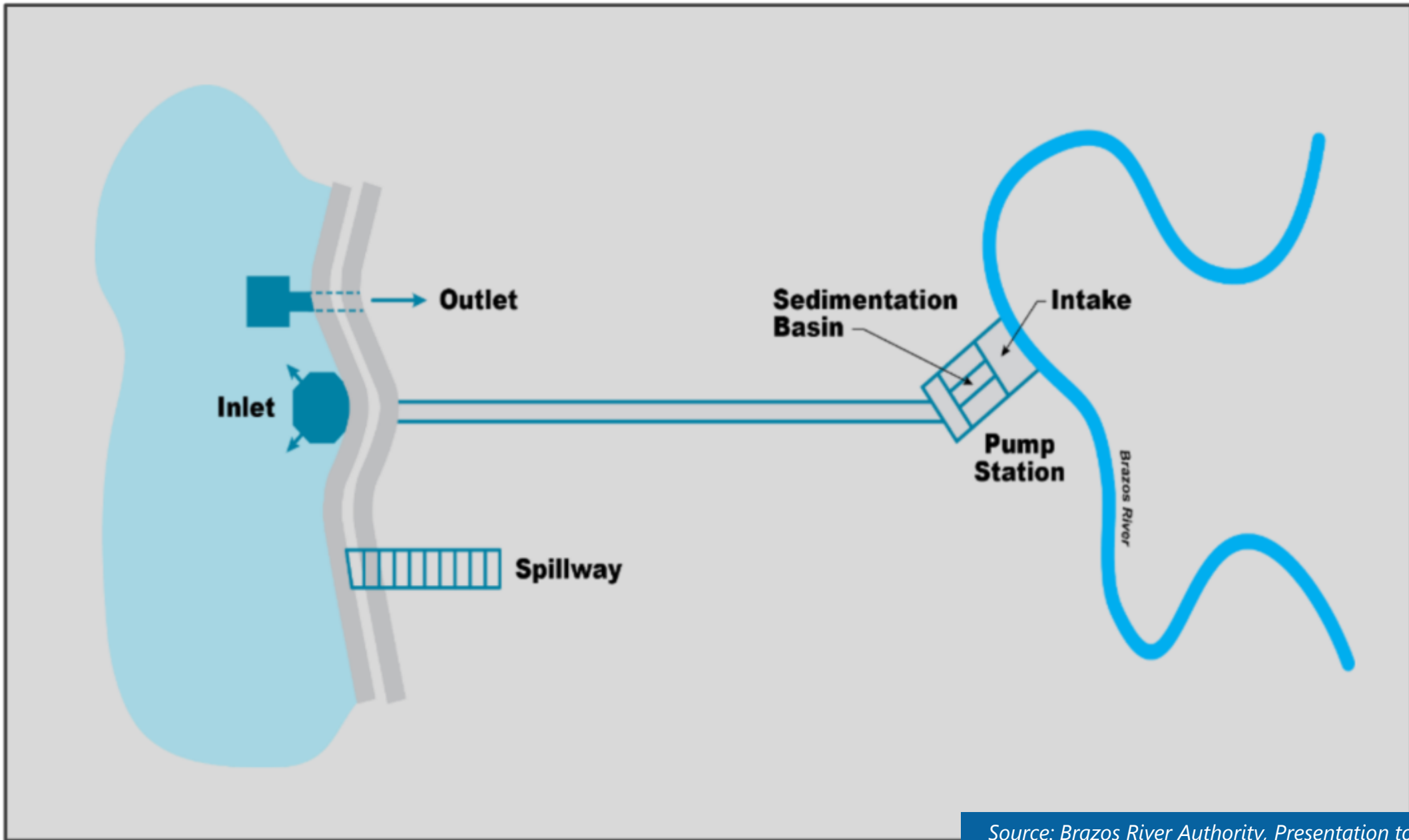
Details Specified in the Allens Creek Reservoir Water Right

- Reservoir capacity
- Water surface elevation
- Diversion locations
- Total diversion rate
- Annual project yield
- Maximum outlet rate





Project Features



Source: Brazos River Authority, Presentation to Elected Officials and Staff, June 30, 2022 (Fulshear, Texas)



What is a 404 Permit and Why is it Needed?



Projects that dredge (excavate) or fill (construct) in wetlands or Waters of the US (WOTUS) require a permit under Section 404 of the Clean Water Act

- The US Army Corps of Engineers (USACE) issues 404 permits.

USACE can only issue a permit for the Least Environmentally Damaging Practicable Alternative (LEDPA)

- The application must demonstrate the proposed project is the LEDPA

The USACE must comply with the National Environmental Policy Act (NEPA)

- NEPA is designed to protect public interest resources.
- NEPA includes agency, tribal and public participation.

NEPA documents can be prepared at varying levels of detail, depending on project complexity and effects

- An Environmental Impact Statement (EIS) – the most comprehensive NEPA document – will be required.

The US EPA reviews USACE NEPA documents for 404 permit approvals.





Federal and State Agency Engagement

US Army Corps of Engineers (USACE)

- Review applications and issues 404 permits
- Prepare NEPA documents for 404 permits

US Fish and Wildlife Service (USFWS)

- Recommend actions to minimize impacts on fish and wildlife
- Section 7 of the Endangered Species Act

US National Marine Fisheries Service (NMFS)

- Similar to USFWS, but for estuarine and marine waters

US Environmental Protection Agency (EPA)

- Review proposed federal actions that affect air quality
- Enforces provisions of 404

Other Federal Agencies

- Natural Resources Conservation Service - farmland
- FEMA - flood hazard zones

Texas Commission on Environmental Quality (TCEQ)

- Certify that state water quality is not degraded or adversely impacted

Texas Parks and Wildlife (TPW)

- Ensure state fish and wildlife resources are not adversely affected

Texas Historical Commission

- Compliance with Section 106 of the National Historic Preservation Act

Texas General Land Office (GLO)

- Compliance with Texas Coastal Zone Management Program



Moving forward

- **Initiate Communications with USACE**
- **Develop Project Description**
 - **Substantiate Purpose and Need**
- **Develop Conceptual Project Layout**
 - **Embankment and Spillway**
 - **River Diversion and Sediment Management System**
 - **Pump Station and Conveyance System Evaluation**
- **Define Field Studies for Engineering, Species and Habitat**

Projected Timeline

Permitting and Design Phase ~ (5 – 10 years)

- *Preliminary Engineering*
- *Inform Stakeholders/Public*
- *Conduct extensive analyses and study work*
- *Apply for and obtain required permits*
- *Complete final engineering design after the 404 permit is issued*

Construction Phase ~ (4 - 7 years)

BENEFITS TO CONSIDER

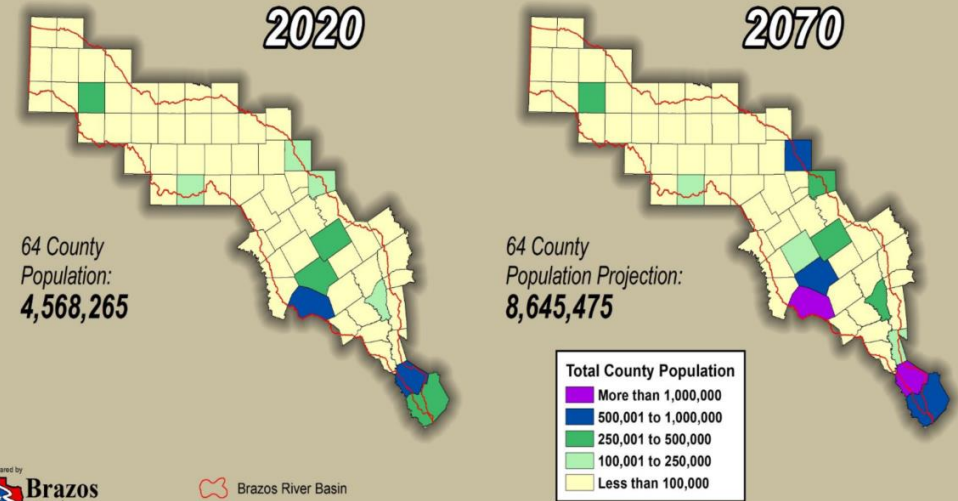
Projected (Potential Benefits)

- Water Supply
 - Downstream of Reservoir (Droughts)
 - Western FBC Water Supply
- Economic Development
 - Recreational Usage (Drought Dependent)
 - Development Opportunities
- BRA Partnership on Erosion Projects



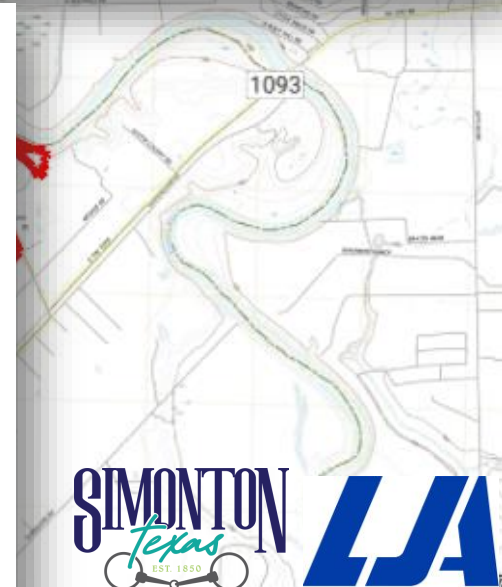
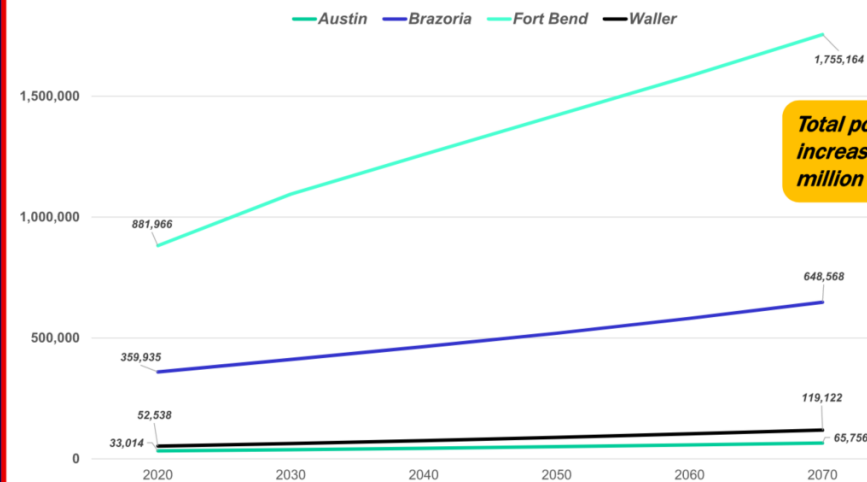
Brazos River Authority

Brazos Basin Population Growth Projected Increase: 4,077,210



Brazos River Authority

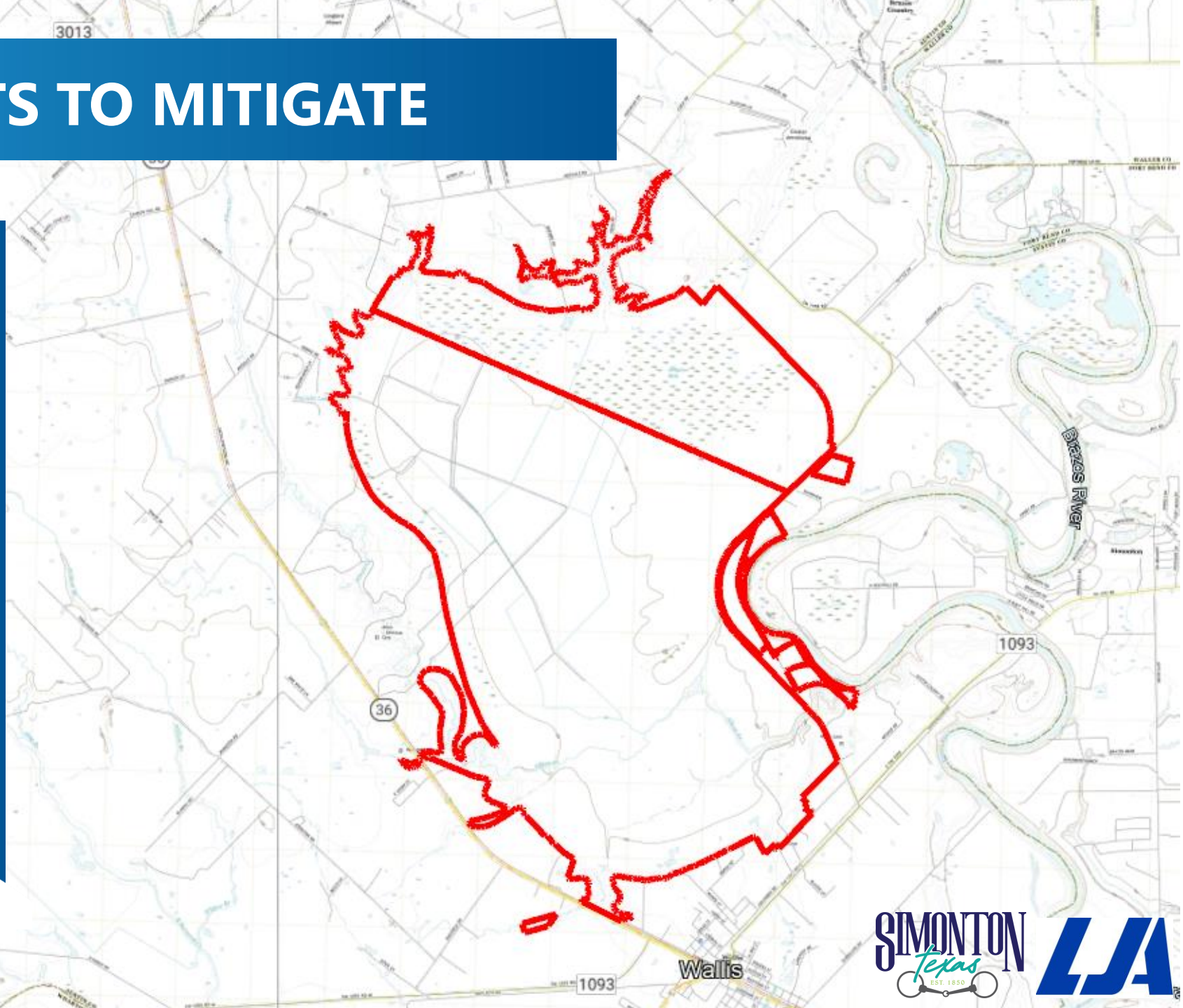
County Projected Growth



POTENTIAL IMPACTS TO MITIGATE

Project to Ensure No Impacts To:

- Environmental Features
 - Wetlands, Habits, Etc.
- Cultural Resources
 - Cemeteries, Landmarks, Etc.
- Increased Development / Traffic
 - Planning Required by
 - BRA
 - TxDOT
 - Austin County
 - Fort Bend County
 - Cities (i.e. Wallis and Simonton)

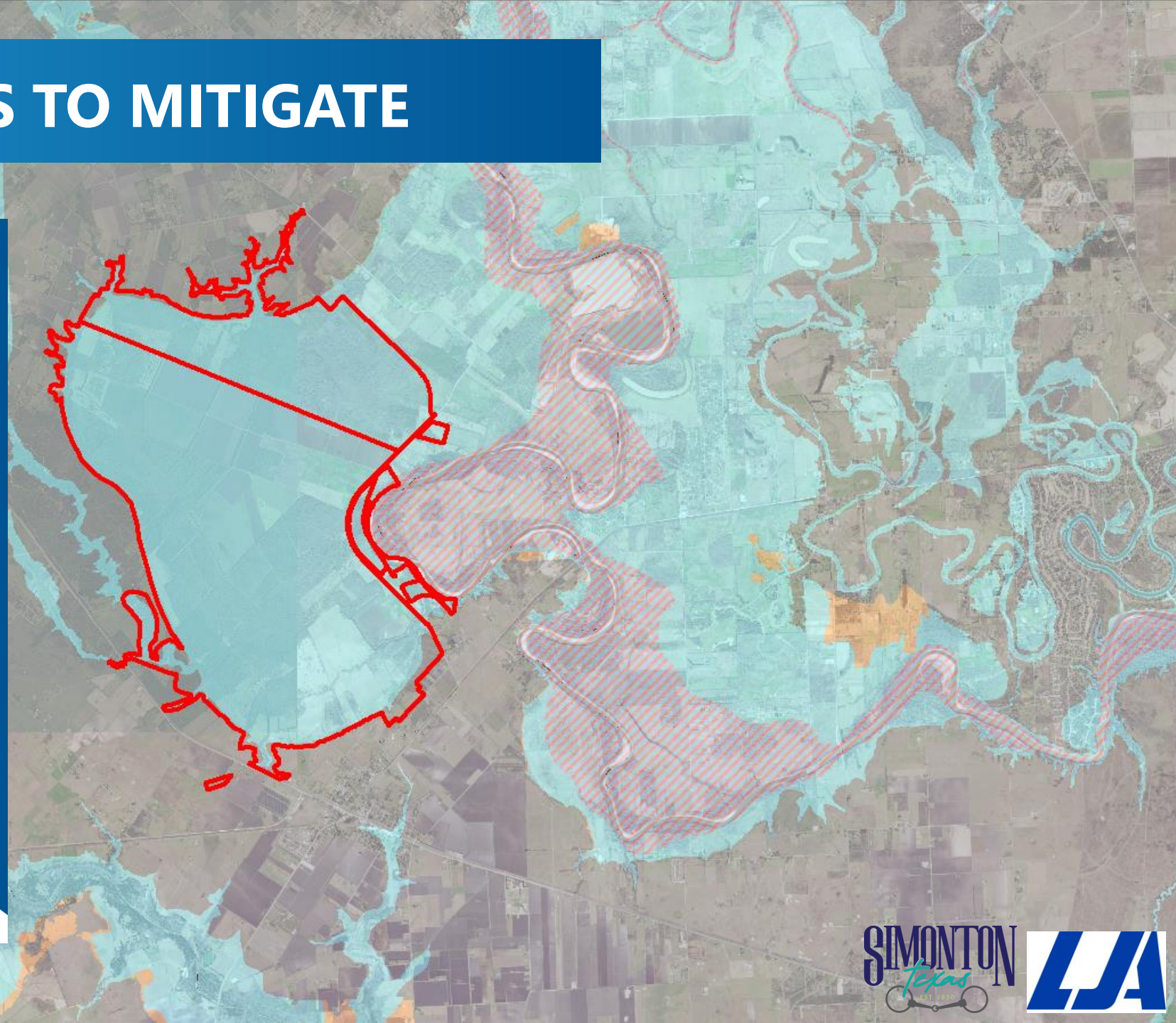


POTENTIAL IMPACTS TO MITIGATE

Project does not include a Flood Benefit in its Current

- 💧 Loss of Existing Flood Storage
- 💧 Increased Water Levels
- 💧 Increased Erosion Potential

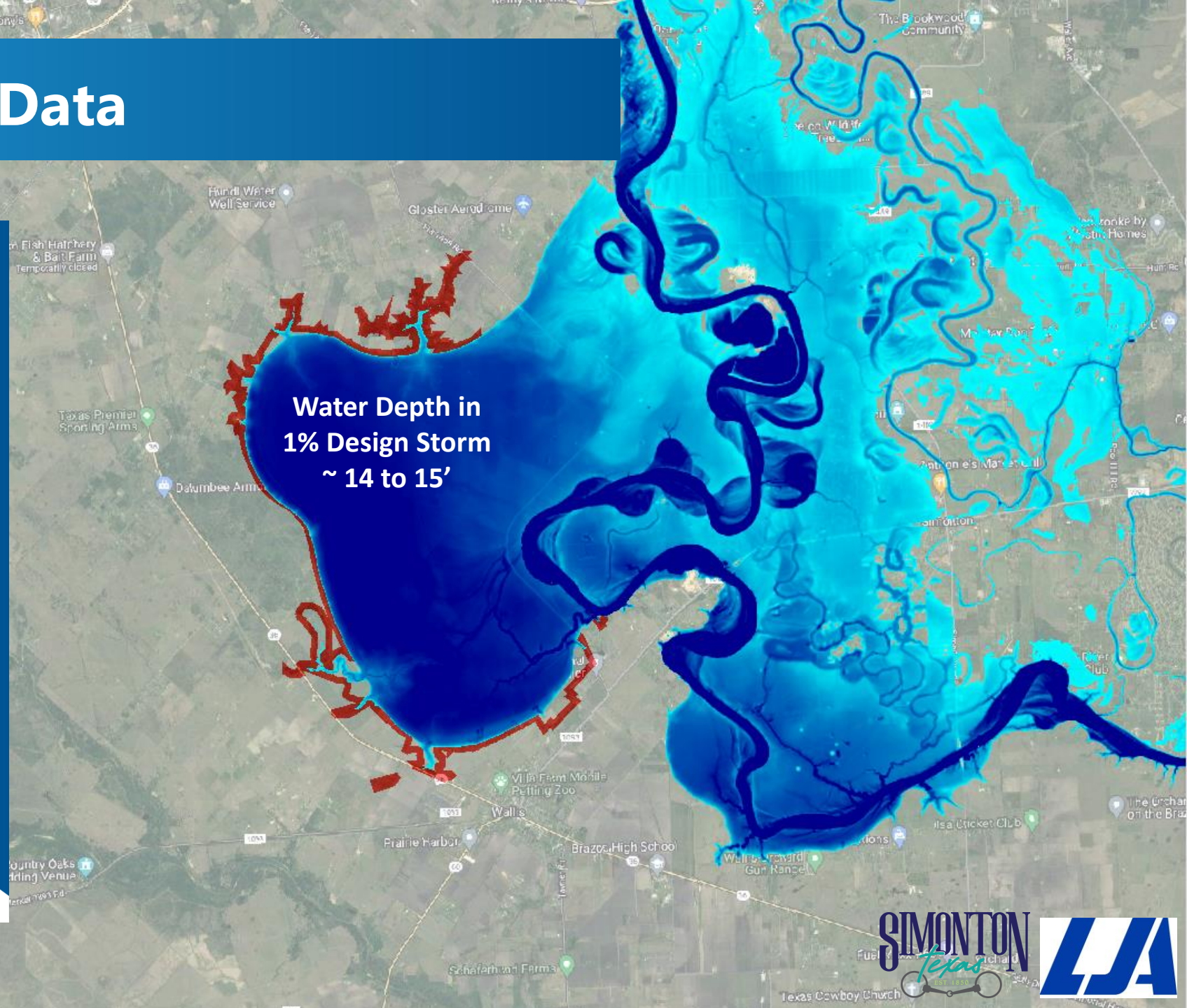
Traditional Flood Events should be evaluated along with Historical Events.

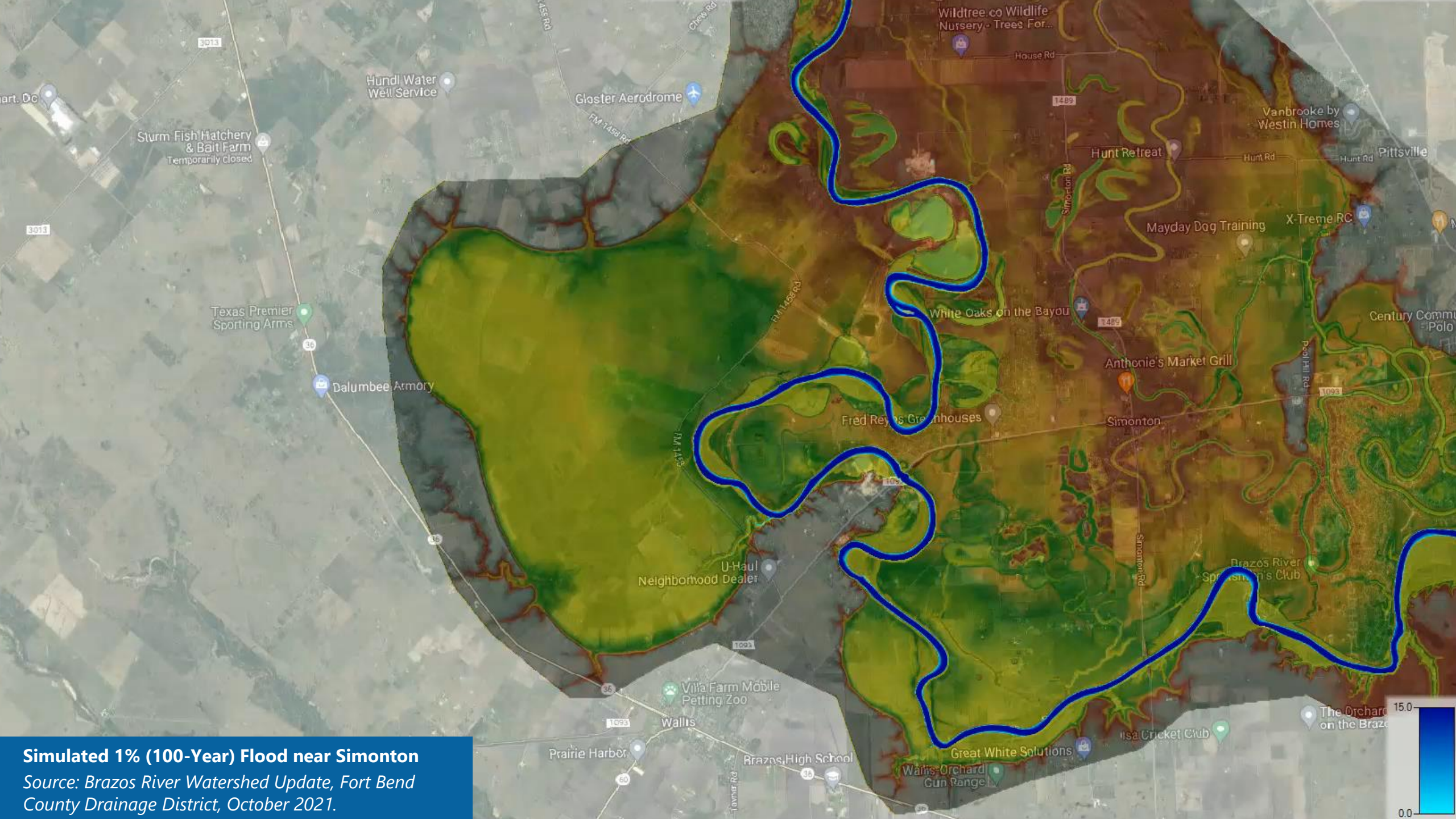


Existing Flood Risk Data

- Effective FEMA Flood (*Estimated*)
 - 1% (100-Year) ~ 112' to 114'
- Oct. 2021 Fort Bend County Updates
 - 1% (100-Year) ~ 113.5' to 114' (*Picture Shown*)
- Hurricane Harvey (*Estimated*)
 - 112' to 115'

FM 1458 Pavement ~ 105' to 106'
Natural Ground of Site ~ 96' to 130'





Simulated 1% (100-Year) Flood near Simonton
Source: Brazos River Watershed Update, Fort Bend County Drainage District, October 2021.

NEXT STEPS

- **SHORT TERM (NEXT 30 TO 60 DAYS)**
 - Identify Partners / Stakeholders with Similar Concerns
 - Austin, Waller, Fort Bend Counties
 - Cities
 - Developers (Twinwood)
 - Authorize Engineer and Staff to Coordinate with BRA
 - Develop Critical Information / Questions for BRA
- **LONG TERM (60+ DAYS)**
 - Review Information from BRA (Availability)
 - Authorize Engineer to Review Data (Availability)

Long term project/permitting will result in slow data sharing and delivery.



More Project Information
<https://brazos.org/AllensCreek>

<https://brazos.org/About-Us/Reservoirs/Allens-Creek-Reservoir-proposed/Frequently-Asked-Questions>

